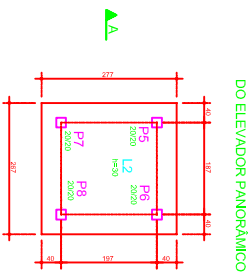
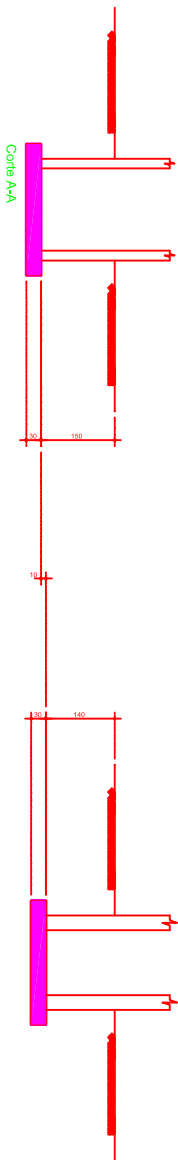


**P5=P6=P7=P8 Lances 1 a 3**

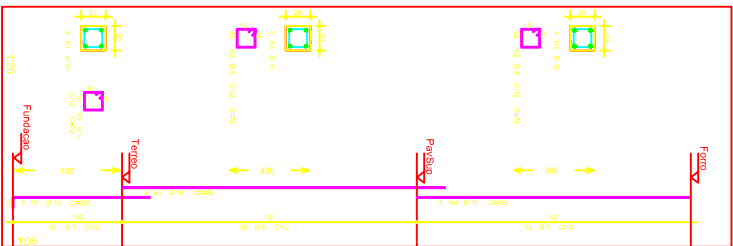
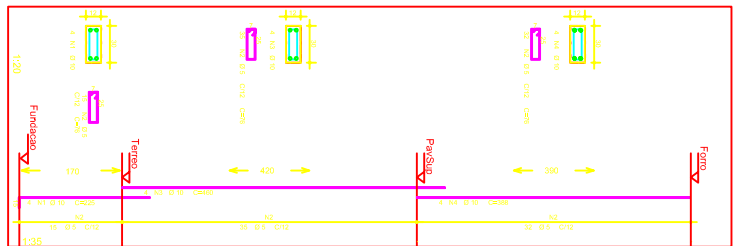
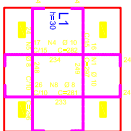
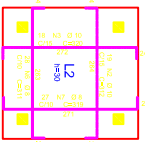


## DO ELEVADOR PANORÂMICO



Corte A-A

## ARMADURA DA FUNDAÇÃO



## NOTAS:

1. TENSÃO DO CONCRETO:  $f_{ck} = 25 \text{ MPa}$
2. COBRIMENTOS DAS ARMADURAS: FUNDAÇÃO: 3,0 cm; PILAR: 2,5 cm; VIGA: 2,5 cm; LAJE: 1,5 cm

